



Belsize Lane NW3

Parkheath  
*Sold on Service*









**Parkheath**  
*Sold on Service*

## Belsize Lane, NW3, Asking Price £529,950, Share of Freehold

### Camden Band C

- An immaculate 1 bedroom raised ground floor flat
- Beautiful white stucco period conversion
- Full of charm and character
- Fireplace, high ceilings
- Floor to ceiling windows and wood flooring
- Elegant 15ft open plan living area
- 11ft bedroom with built-in wardrobes
- Share in freehold
- Prominent location, moments from Belsize Village and Swiss Cottage station
- Walking distance to Belsize Park, Hampstead and Finchley Road

Belsize Park/Hampstead  
208 Haverstock Hill  
NW3 2AG  
Sales 020 7431 1234  
Lettings 020 7431 3104  
[nw3@parkheath.com](mailto:nw3@parkheath.com)

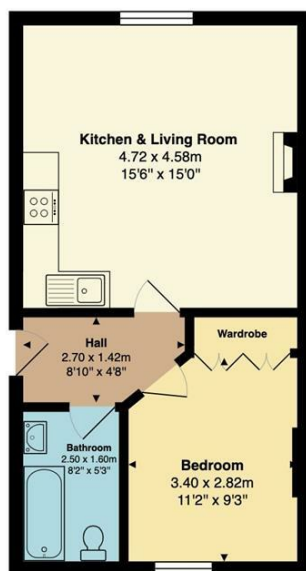
Kensal Rise  
54-56 Chamberlayne Rd  
NW10 3JH  
Tel 020 8960 4845  
[kensal@parkheath.com](mailto:kensal@parkheath.com)

South/West Hampstead  
192 West End Lane  
NW6 1SG  
Sales & Lettings  
Tel 020 7794 7111  
[192@parkheath.com](mailto:192@parkheath.com)

Property Management  
192 West End Lane  
NW6 1SG  
020 7433 6174  
[pm@parkheath.com](mailto:pm@parkheath.com)

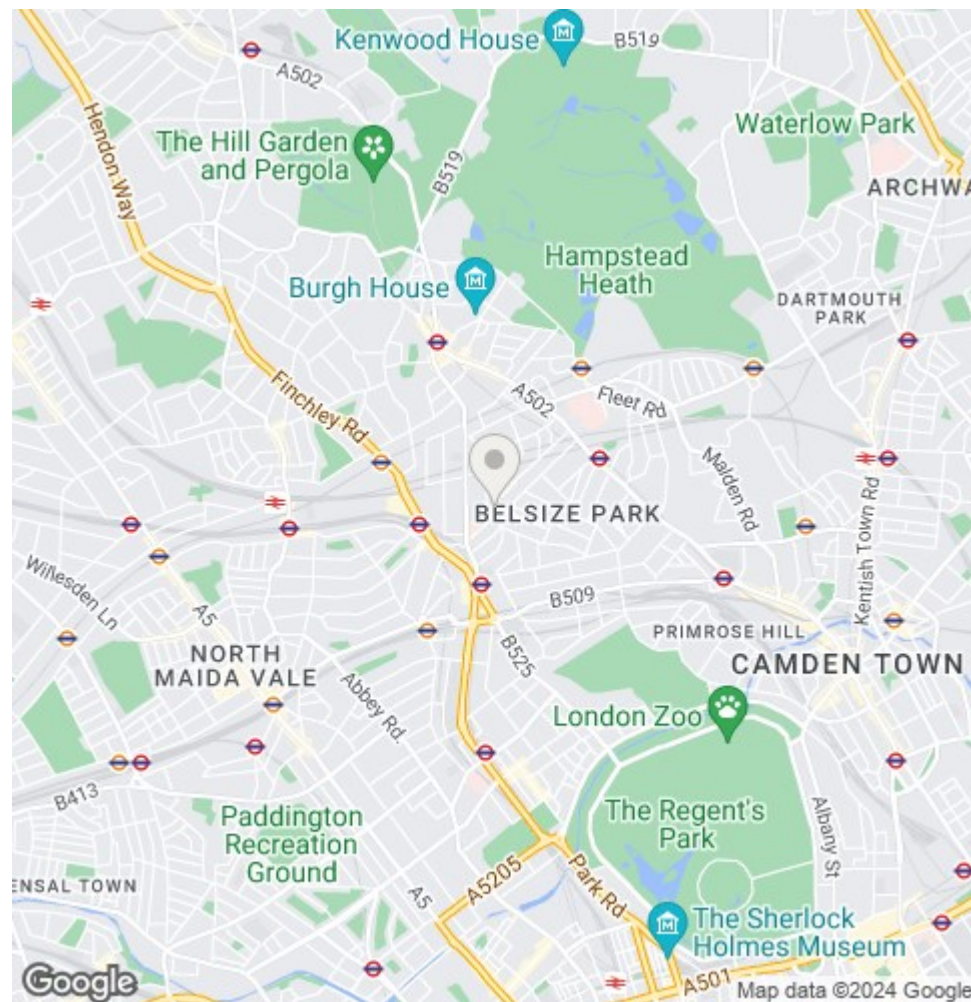
[www.parkheath.com](http://www.parkheath.com)

Ground Floor Flat , 81 Belsize Lane, London, NW3 5AU



Total Area: 41.0 m<sup>2</sup> ... 442 ft<sup>2</sup>

All measurements are approximate and for display purposes only



The particulars do not constitute part of an offer or contract. The particulars, including text, photographs and plans, are for the guidance only of prospective purchasers/tenants and must not be relied upon as statements of fact. The descriptions provided therein represent the opinion of the author and whilst given in good faith should not be construed as statements of fact. Nothing in these particulars shall be deemed a statement that the property is in good condition or otherwise or that any services or facilities are in good working order. All measurements are approximate